

TITLE : MV270FHB-N20-AWS0/A850**Product Specification****Rev. P6**

Fuzhou BOE Optoelectronics Technology Co.,Ltd

TITLE : MV270FHB-N20-AWS0/A850**Product Specification****Rev. P6**

Fuzhou BOE Optoelectronics Technology Co.,Ltd

<div>BOE</div>	PRODUCT GROUP	REV	ISSUE DATE
	Customer SPEC	Rev. P6	2021.09.17

REVISION HISTORY

preliminary specification
Final specification

Revision No.	Page	Description of changes	Date	Prepared
Rev.P0	ALL	Preliminary specification	2020.07.17	You Li
Rev.P1	P11	V frequency min 50Hz→48Hz	2020.08.12	You Li
Rev.P2	P5	Update Tr & weight	2020.09.03	You Li
Rev.P3	P11	Update Dclk min 61.87MHz→61MHz Update Dclk max 92.8MHz→93.5MHz	2020.12.07	You Li
Rev.P4	P11	Add Vtotal Note	2021.06.07	You Li
Rev.P5	P11	Update Dclk min 61MHz→60MHz	2021.08.16	You Li
Rev.P6	P8	Power Supply Current 420mA→800mA Power Consumption 3.2V→4V	2021.09.17	Liangzhen Lin

--	--	--

SPEC. NUMBER S8-65-8D-183	SPEC. TITLE MV270FHB-N20 Product Specification Rev. P5	PAGE 3 OF 26
------------------------------	---	-----------------

Contents

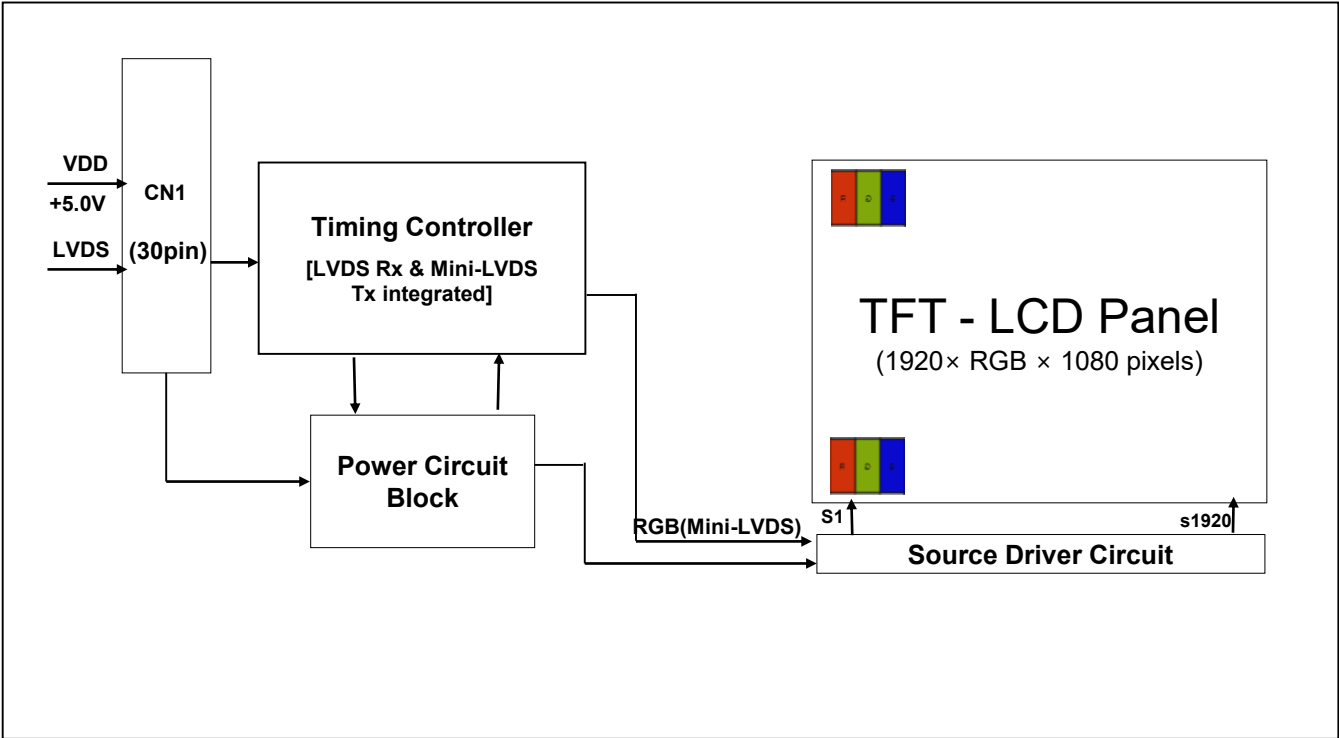
No.	Item	Page
1.0	General Description	4
2.0	Absolute Maximum Ratings	6
3.0	Electrical Specifications	7
4.0	Optical Specifications	8
5.0	Interface Connection	10
6.0	Signal Timing Specifications	12
7.0	Signal Timing Waveforms of Interface Signal	14
8.0	Input Signals, Display Colors & Gray Scale of Colors	16
9.0	Power Sequence	17
10.0	Mechanical Characteristics	18
11.0	Reliability Test	19
12.0	Handling& Cautions	20
13.0	Product Serial Number	21
14.0	Packing	22
15.0	Appendix	24

<div>BOE</div>	PRODUCT GROUP	REV	ISSUE DATE
	Customer SPEC	Rev. P6	2021.09.17

1.0 GENERAL DESCRIPTION

1.1 Introduction

MV270FHB-N20 is a color active matrix TFT LCD module using amorphous silicon TFT's (Thin Film Transistors) as an active switching devices. This module has a 27 inch diagonally measured active area with FHD resolutions (1920 horizontal by 1080 vertical pixel array). Each pixel is divided into RED, GREEN, BLUE dots which are arranged in vertical stripe and this module can display 16.7M colors. The TFT-LCD panel used for this module is adapted for a low reflection and higher color type.



1.2 Features

- LVDS Interface with 2 pixel / clock
- 8-bit (6-bit+FRC) color depth, display 16.7M B colors
- Color Gamut 72%@NTSC(CIE 1931)
- High luminance and contrast ratio, low reflection and wide viewing angle
- DE (Data Enable) only
- RoHS/Halogen Free
- Gamma Correction
- Reverse type

SPEC. NUMBER	SPEC. TITLE	PAGE
S8-65-8D-183	MV270FHB-N20 Product Specification Rev. P5	5 OF 26

1.3 Application

- Desktop Type of PC & Workstation Use
- Slim-Size Display for Stand-alone Monitor
- Display Terminals for Control System
- Monitors for Process Controller

1.4 General Specification

The followings are general specifications at the model MV270FHB-N20.

<Table 1. General Specifications>

Parameter	Specification	Unit	Remarks
Active area	597.888(H) × 336.312(V)	mm	
Number of pixels	1920(H) × 1080 (V)	pixels	
Pixel pitch	0.3114 (H) × 0.3114(V)	mm	
Pixel arrangement	RGB Vertical stripe		
Display colors	16.7M	colors	6-bit+FRC
Display mode	Normally Black		
Open Cell Transmittance	5.1 (typ.)	%	At center point with BOE BLU
Weight	660	g	
Power Consumption	3.2 (typ.)	Watt	
Surface Treatment	Haze 25%, 3H		

2.0 ABSOLUTE MAXIMUM RATINGS

The followings are maximum values which, if exceed, may cause faulty operation or damage to the unit. The operational and non-operational maximum voltage and current values are listed in Table 2.

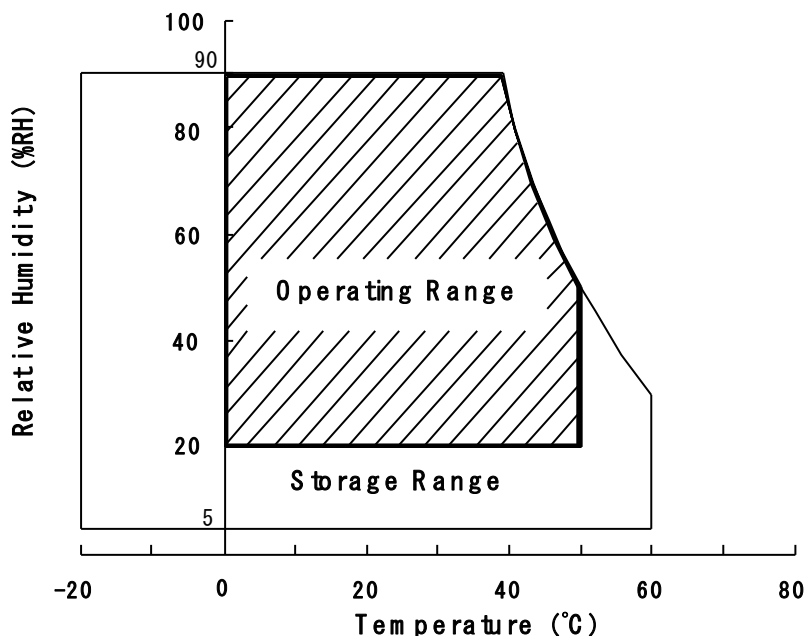
< Table 2. Absolute Maximum Ratings >

[VSS=GND=0V]

Parameter	Symbol	Min.	Max.	Unit	Remarks
Power Supply Voltage	V_{DD}	-0.3	6.0	V	Ta = 25 °C
Logic Supply Voltage	V_{IN}	VSS-0.3	$V_{DD}+0.3$	V	
Operating Temperature	T_{OP}	0	+50	°C	1)
Storage Temperature	T_{ST}	-20	+60	°C	1)
Panel Surface Temperature (Operation)	Tsurface	0	+65	°C	2)

Note : 1) Temperature and relative humidity range are shown in the figure below.

Wet bulb temperature should be 39 °C max. and no condensation of water.



Note : 2) Panel Surface Temperature should be Min. 0°C and Max. +65°C under the VDD = 5.0V, Frame rate = 60Hz, 25°C ambient Temp. no humidity control and LED string current is typical value.

3.0 ELECTRICAL SPECIFICATIONS

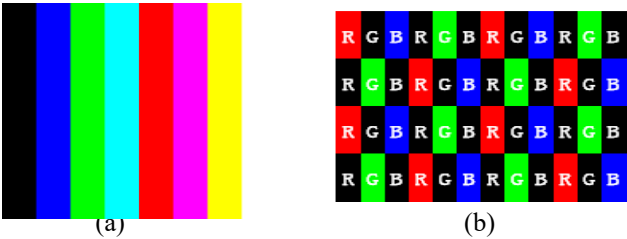
3.1Electrical Specifications

< Table 3. Open Cell Electrical specifications >

[Ta =25±2 °C]

Parameter		Min.	Typ.	Max.	Unit	Remarks
Power Supply Voltage	V _{DD}	4.5	5	5.5	V	Note1
Power Supply Current	I _{DD}	-	800	1060	mA	
In-Rush Current	I _{RUSH}	-	2.0	3.0	A	Note 2
Permissible Input Ripple Voltage	V _{RF}	-	-	400	mV	Note1,3
High Level Differential Input Threshold Voltage	V _{IH}	+100	-	+300	mV	
Low Level Differential Input Threshold Voltage	V _{IL}	-300	-	-100	mV	
Differential input voltage	V _{ID}	200	-	600	mV	
Differential input common mode voltage	V _{cm}	1.0	1.2	1.5		V _{IH} =100mV, V _{IL} =-100mV
Power Consumption	P _D	-	4.0	5.3	W	

Notes :
1. The supply voltage is measured and specified at the interface connector of LCM.
The current draw and power consumption specified is for VDD=5.0V, Frame rate=60Hz
Clock frequency = 92.8 MHz. Test Pattern of power supply current
a) Typ : Color Test
b) Max : Skip Subpixel255



2. Duration of rush current is about 2 ms and rising time of VDD is 520 μs ± 20 %
3. Ripple Voltage should be covered by Input voltage Spec.
4. Calculated value for reference (Input pins*VPIN ×IPIN) excluding inverter loss.

4.0 OPTICAL SPECIFICATION

4.1 Overview

The test of Optical specifications shall be measured in a dark room (ambient luminance ≤ 1 lux and temperature = $25\pm2^{\circ}\text{C}$) with the equipment of Luminance meter system (Goniometer system and TOPCONE PR730) and test unit shall be located at an approximate distance 50cm from the LCD surface at a viewing angle of θ and Φ equal to 0° . We refer to $\theta_{\theta=0}$ ($=\theta_3$) as the 3 o'clock direction (the “right”), $\theta_{\theta=90}$ ($=\theta_{12}$) as the 12 o'clock direction (“upward”), $\theta_{\theta=180}$ ($=\theta_9$) as the 9 o'clock direction (“left”) and $\theta_{\theta=270}$ ($=\theta_6$) as the 6 o'clock direction (“bottom”). While scanning θ and/or Φ , the center of the measuring spot on the Display surface shall stay fixed. The measurement shall be executed after 30 minutes warm-up period. VDD shall be 5.0V +/-10% at 25°C . Optimum viewing angle direction is 6 'clock.

4.2 Optical Specifications

[VDD = 5.0V, Frame rate = 60Hz, Clock = 92.8MHz, $I_{BL} = 280\text{mA}$, $T_a = 25\pm2^{\circ}\text{C}$]
 < Table 5. Module Optical >

Parameter		Symbol	Condition	Min.	Typ.	Max.	Unit	Remark
Viewing Angle range	Horizontal	Θ_3	CR > 10	85	89	-	Deg.	Note 1
		Θ_9		85	89	-	Deg.	
	Vertical	Θ_{12}		85	89	-	Deg.	
		Θ_6		85	89	-	Deg.	
Luminance Contrast ratio		CR	$\Theta = 0^{\circ}$ (Center) Normal Viewing Angle	700	1000			Note 2
Transmittance		Tr		-	5.1	-	%	Note 3
White luminance uniformity		ΔY		75	80		%	Note 4
Reproduction of color	White	W_x		-0.03	TBD	+0.03	-	Note 5 (With BOE BLU)
		W_y			TBD		-	
	Red	R_x			TBD		-	
		R_y			TBD		-	
	Green	G_x			TBD		-	
		G_y			TBD		-	
	Blue	B_x			TBD		-	
		B_y			TBD		-	
Response Time	GTG	T_g			14	20	ms	Note 6
Cross Talk		CT		-	-	2.0	%	Note 7

BOE	PRODUCT GROUP	REV	ISSUE DATE
	Customer SPEC	Rev. P6	2021.09.17

Note :

1. Viewing angle is the angle at which the contrast ratio is greater than 10. The viewing are determined for the horizontal or 3, 9 o'clock direction and the vertical or 6, 12 o'clock direction with respect to the optical axis which is normal to the LCD surface.
2. Contrast measurements shall be made at viewing angle of $\theta = 0^\circ$ and at the center of the LCD surface. Luminance shall be measured with all pixels in the view field set first to white, then to the dark (black) state. (See FIGURE 1 shown in Appendix) Luminance Contrast Ratio (CR) is defined mathematically.

$$CR = \frac{\text{Luminance when displaying a white raster}}{\text{Luminance when displaying a black raster}}$$

3. Center Luminance of white is defined as the LCD surface. Luminance shall be measured with all pixels in the view field set first to white. This measurement shall be taken at the locations shown in FIGURE 2 for a total of the measurements per display.
4. The White luminance uniformity on LCD surface is then expressed as :
 $\Delta Y = (\text{Minimum Luminance of 9points} / \text{Maximum Luminance of 9points}) * 100$
 (See FIGURE 2 shown in Appendix).
5. The color chromaticity coordinates specified in Table 5. shall be calculated from the spectral data measured with all pixels first in red, green, blue and white. Measurements shall be made at the center of the panel.
6. Response time Tg is the average time required for display transition by switching the input signal as below table and is based on Frame rate fV =60Hz to optimize.
 Each time in below table is defined as appendix Figure 3 and shall be measured by switching the input signal for “any level of gray(bright)”and “any level of gray(dark)”
7. Cross-Talk of one area of the LCD surface by another shall be measured by comparing the luminance (Y_A) of a 25mm diameter area, with all display pixels set to a gray level, to the luminance (Y_B) of that same area when any adjacent area is driven dark. (See FIGURE 4 shown in Appendix).

SPEC. NUMBER S8-65-8D-183	SPEC. TITLE MV270FHB-N20 Product Specification Rev. P5	PAGE 10 OF 26
------------------------------	---	------------------

BOE	PRODUCT GROUP	REV	ISSUE DATE
	Customer SPEC	Rev. P6	2021.09.17

5.0 INTERFACE CONNECTION.

5.1 Electrical Interface Connection

- CN1 Module Side Connector : UJU IS100-L300-C23or Equivalent

Pin No	Symbol	Function	Remark
1	RXO0N	Negative LVDS differential data input	
2	RXO0P	Positive LVDS differential data input	
3	RXO1N	Negative LVDS differential data input	
4	RXO1P	Positive LVDS differential data input	
5	RXO2N	Negative LVDS differential data input	
6	RXO2P	Positive LVDS differential data input	
7	BIST	BIST	
8	RXOCN-	Negative LVDS differential clock input	
9	RXOCP	Positive LVDS differential clock input	
10	RXO3N	Negative LVDS differential data input	
11	RXO3P	Positive LVDS differential data input	
12	RXE0N	Negative LVDS differential data input	
13	RXE0P	Positive LVDS differential data input	
14	GND	Ground	
15	RXE1N	Negative LVDS differential data input	
16	RXE1P	Positive LVDS differential data input	
17	GND	Ground	
18	RXE2N	Negative LVDS differential data input	
19	RXE2P	Positive LVDS differential data input	
20	RXECN	Negative LVDS differential clock input	
21	RXECP	Positive LVDS differential clock input	
22	RXE3N	Negative LVDS differential data input	
23	RXE3P	Positive LVDS differential data input	
24	GND	Ground	
25	SCL	I2C Clock (For VCOM tuning)	
26	SDA	I2C Data (For VCOM tuning)	
27	NC	NC	
28	VIN	Power Supply 5V	
29	VIN	Power Supply 5V	
30	VIN	Power Supply 5V	

SPEC. NUMBER S8-65-8D-183	SPEC. TITLE MV270FHB-N20 Product Specification Rev. P5	PAGE 11 OF 26
------------------------------	---	------------------

6.0 SIGNAL TIMING SPECIFICATION

6.1 The MV270FHB-N20 is operated by the DE only.

Item	Symbols		Min	Typ	Max	Unit	Note
DCLK	Period	tCLK	10.78	13.47	16.16	ns	
	Frequency	fCLK	60	74.25	93.5	MHz	
Hsync	Period	tHP	1050	1100	1120	tCLK	
	Horizontal Valid	tHV	960	960	960	tCLK	
	Horizontal Blank	tHB	90	140	160	tCLK	
	Frequency	fH	56	67.5	84.5	KHz	
Vsync	Period	tVP	1110	1125	1251	tHP	
	Vertical Valid	tVV	1080	1080	1080	tHP	
	Vertical Blank	tVB	30	45	171	tHP	
	Frequency	fV	48	60	75	Hz	
LVDS Receiv er clock	Input spread spectrum ratio	SSr	-3%	-	+3%	%	

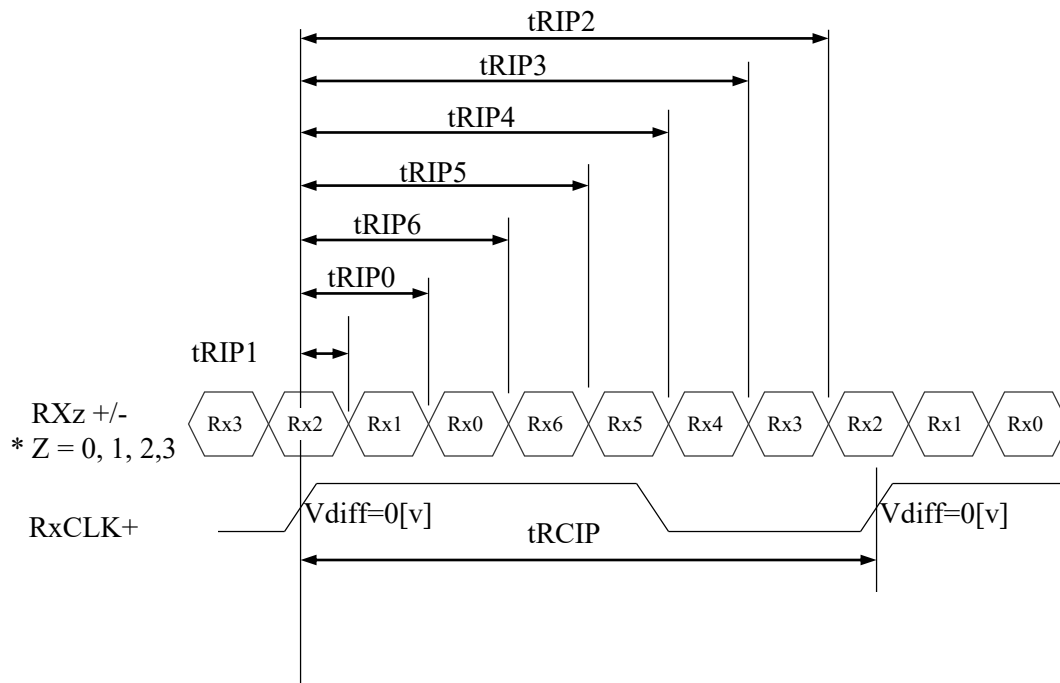
Note A: [Support Vtotal_max=1803 tHP](#), only for Freesync Product. And DCLK should be used according to the specification.

6.2 LVDS Rx Interface Timing Parameter

The specification of the LVDS Rx interface timing parameter is shown in Table 7.

<Table 7. LVDS Rx Interface Timing Specification>

Item	Symbol	Min	Typ	Max	Unit	Remark
CLKIN Period	tRCIP	10.78	13.47	16.16	nsec	
Input Data 0	tRIP1	-0.4	0.0	+0.4	nsec	
Input Data 1	tRIP0	tRCIP/7-0.4	tRCIP/7	tRCIP/7+0.4	nsec	
Input Data 2	tRIP6	2 × tRCIP/7-0.4	2 × tRCIP/7	2 × tRCIP/7+0.4	nsec	
Input Data 3	tRIP5	3 × tRCIP/7-0.4	3 × tRCIP/7	3 × tRCIP/7+0.4	nsec	
Input Data 4	tRIP4	4 × tRCIP/7-0.4	4 × tRCIP/7	4 × tRCIP/7+0.4	nsec	
Input Data 5	tRIP3	5 × tRCIP/7-0.4	5 × tRCIP/7	5 × tRCIP/7+0.4	nsec	
Input Data 6	tRIP2	6 × tRCIP/7-0.4	6 × tRCIP/7	6 × tRCIP/7+0.4	nsec	

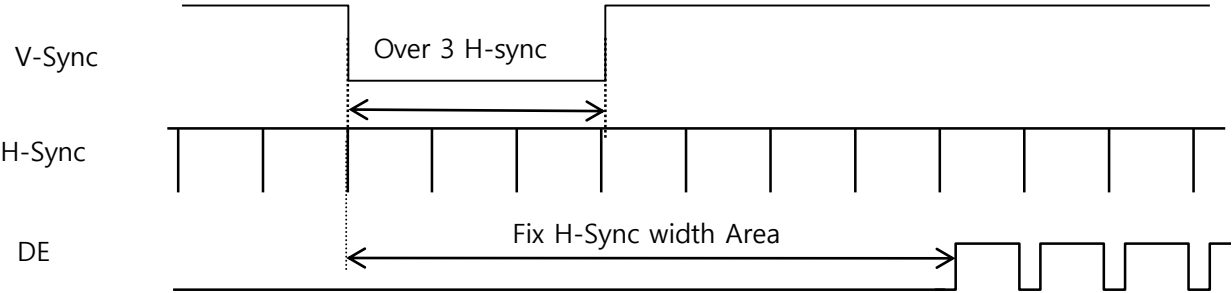


$$* V_{diff} = (RXZ+) - (RXZ-), \dots, (RXCLK+) - (RXCLK-)$$

BOE	PRODUCT GROUP	REV	ISSUE DATE
	Customer SPEC	Rev. P6	2021.09.17

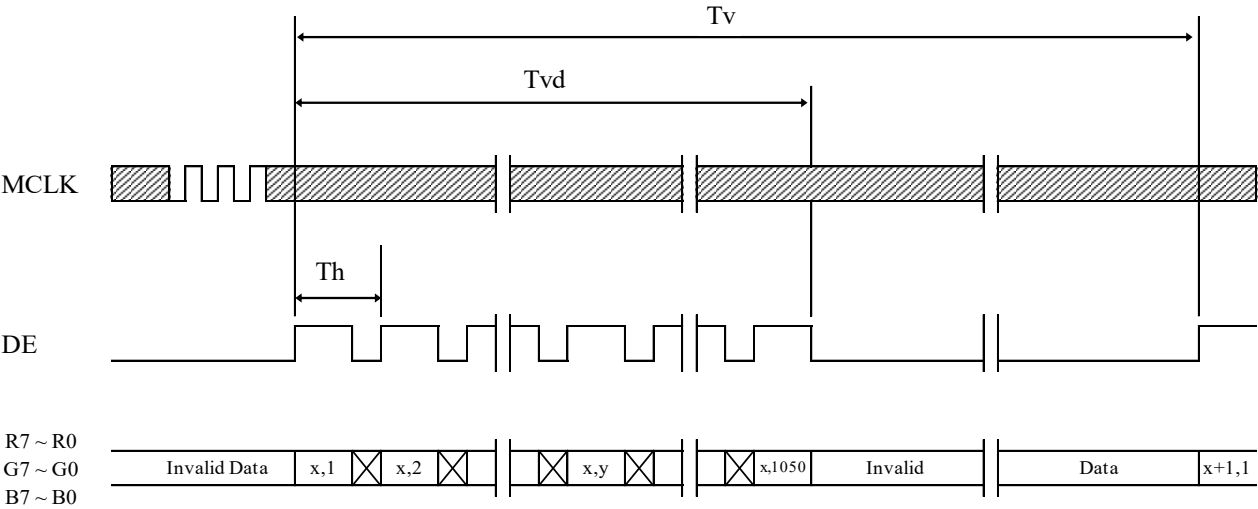
7.0 SIGNAL TIMING WAVEFORMS OF INTERFACE SIGNAL

7.1 Sync Timing Waveforms



- 1) Need over 3 H-sync during V-Sync Low
- 2) Fix H-Sync width from V-Sync falling edge to first rising edge

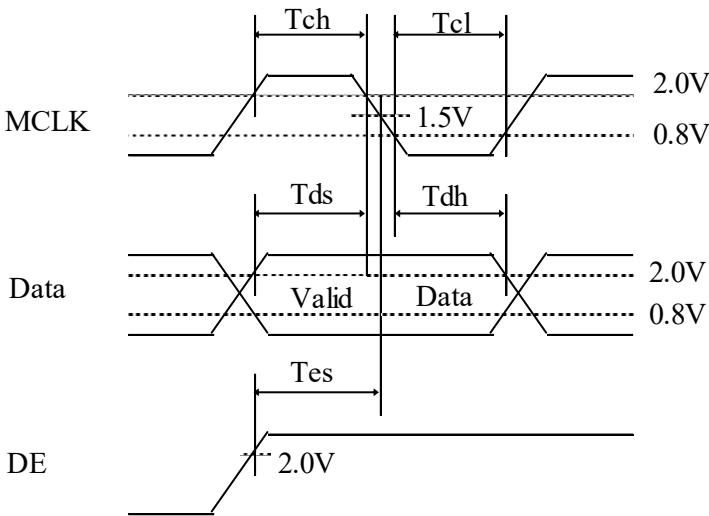
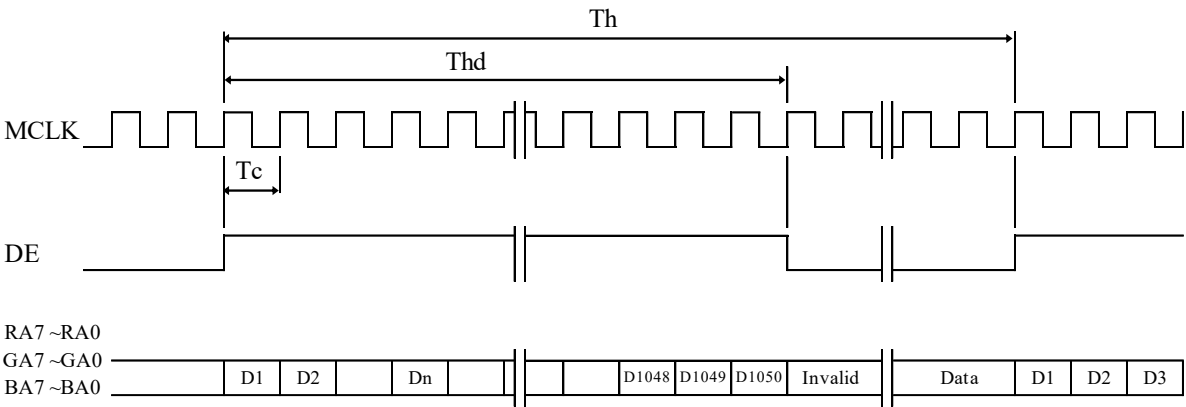
7.2 Vertical Timing Waveforms



SPEC. NUMBER S8-65-8D-183	SPEC. TITLE MV270FHB-N20 Product Specification Rev. P5	PAGE 14 OF 26
------------------------------	---	------------------

<div>BOE</div>	PRODUCT GROUP	REV	ISSUE DATE
	Customer SPEC	Rev. P6	2021.09.17

7.3 Horizontal Timing Waveforms



SPEC. NUMBER S8-65-8D-183	SPEC. TITLE MV270FHB-N20 Product Specification Rev. P5	PAGE 15 OF 26
------------------------------	---	------------------

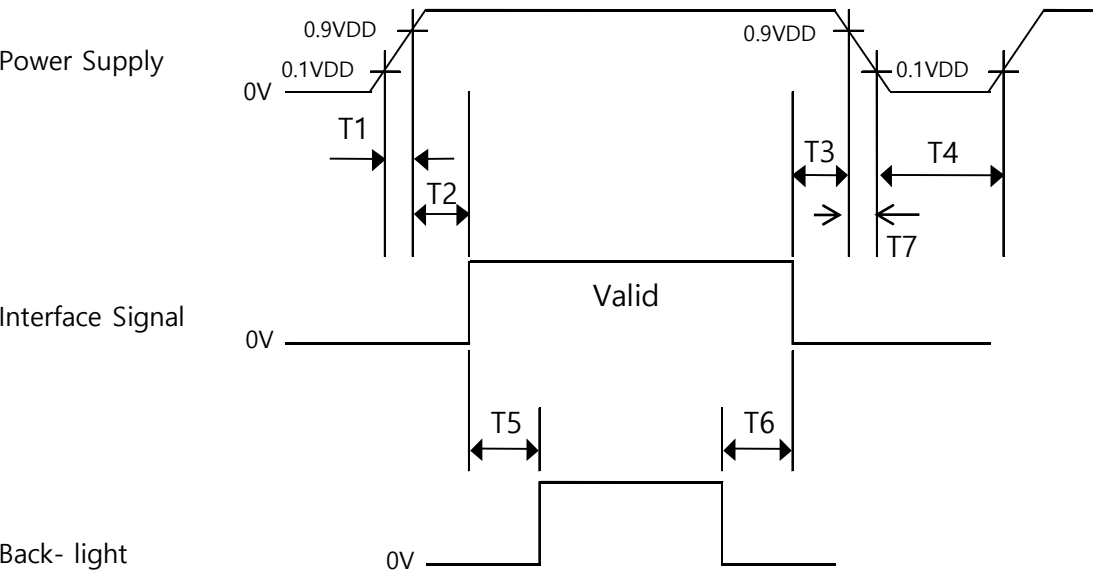
8.0 INPUT SIGNALS, BASIC DISPLAY COLORS & GRAY SCALE OF COLORS

Color & Gray Scale		RED DATA								GREEN DATA								BLUE DATA							
		R7	R6	R5	R4	R3	R2	R1	R0	G7	G6	G5	G4	G3	G2	G1	G0	B7	B6	B5	B4	B3	B2	B1	B0
Basic Colors	Black	0	0	0	0	0	0	0	0	0	0	0	0	0	0	0	0	0	0	0	0	0	0	0	0
	Blue	0	0	0	0	0	0	0	0	0	0	0	0	0	0	0	0	1	1	1	1	1	1	1	1
	Green	0	0	0	0	0	0	0	0	1	1	1	1	1	1	1	1	0	0	0	0	0	0	0	0
	Cyan	0	0	0	0	0	0	0	0	1	1	1	1	1	1	1	1	1	1	1	1	1	1	1	1
	Red	1	1	1	1	1	1	1	1	0	0	0	0	0	0	0	0	0	0	0	0	0	0	0	0
	Magenta	1	1	1	1	1	1	1	1	0	0	0	0	0	0	0	0	1	1	1	1	1	1	1	1
	Yellow	1	1	1	1	1	1	1	1	1	1	1	1	1	1	1	1	0	0	0	0	0	0	0	0
	White	1	1	1	1	1	1	1	1	1	1	1	1	1	1	1	1	1	1	1	1	1	1	1	1
Gray Scale of RED	Black	0	0	0	0	0	0	0	0	0	0	0	0	0	0	0	0	0	0	0	0	0	0	0	0
	△	0	0	0	0	0	0	0	1	0	0	0	0	0	0	0	0	0	0	0	0	0	0	0	0
	Darker	0	0	0	0	0	0	1	0	0	0	0	0	0	0	0	0	0	0	0	0	0	0	0	0
	△	↑								↑								↑							
	▽	↓								↓								↓							
	Brighter	1	1	1	1	1	1	0	1	0	0	0	0	0	0	0	0	0	0	0	0	0	0	0	0
	▽	1	1	1	1	1	1	0	0	0	0	0	0	0	0	0	0	0	0	0	0	0	0	0	0
	Red	1	1	1	1	1	1	1	1	0	0	0	0	0	0	0	0	0	0	0	0	0	0	0	0
Gray Scale of GREEN	Black	0	0	0	0	0	0	0	0	0	0	0	0	0	0	0	0	0	0	0	0	0	0	0	0
	△	0	0	0	0	0	0	0	0	0	0	0	0	0	0	0	1	0	0	0	0	0	0	0	0
	Darker	0	0	0	0	0	0	0	0	0	0	0	0	0	0	1	0	0	0	0	0	0	0	0	0
	△	↑								↑								↑							
	▽	↓								↓								↓							
	Brighter	0	0	0	0	0	0	0	0	1	1	1	1	1	1	0	1	0	0	0	0	0	0	0	0
	▽	0	0	0	0	0	0	0	0	1	1	1	1	1	1	0	0	0	0	0	0	0	0	0	0
	Green	0	0	0	0	0	0	0	0	1	1	1	1	1	1	1	1	0	0	0	0	0	0	0	0
Gray Scale of BLUE	Black	0	0	0	0	0	0	0	0	0	0	0	0	0	0	0	0	0	0	0	0	0	0	0	0
	△	0	0	0	0	0	0	0	0	0	0	0	0	0	0	0	0	0	0	0	0	0	0	0	1
	Darker	0	0	0	0	0	0	0	0	0	0	0	0	0	0	0	0	0	0	0	0	0	0	1	0
	△	↑								↑								↑							
	▽	↓								↓								↓							
	Brighter	0	0	0	0	0	0	0	0	0	0	0	0	0	0	0	0	1	1	1	1	1	1	0	1
	▽	0	0	0	0	0	0	0	0	0	0	0	0	0	0	0	0	1	1	1	1	1	1	1	0
	Blue	0	0	0	0	0	0	0	0	0	0	0	0	0	0	0	0	1	1	1	1	1	1	1	1
Gray Scale of WHITE	Black	0	0	0	0	0	0	0	0	0	0	0	0	0	0	0	0	0	0	0	0	0	0	0	0
	△	0	0	0	0	0	0	0	1	0	0	0	0	0	0	0	1	0	0	0	0	0	0	0	1
	Darker	0	0	0	0	0	0	1	0	0	0	0	0	0	0	1	0	0	0	0	0	0	0	1	0
	△	↑								↑								↑							
	▽	↓								↓								↓							
	Brighter	1	1	1	1	1	1	0	1	1	1	1	1	1	1	0	1	1	1	1	1	1	1	0	1
	▽	1	1	1	1	1	1	0	0	1	1	1	1	1	1	1	0	1	1	1	1	1	1	1	0
	White	1	1	1	1	1	1	1	1	1	1	1	1	1	1	1	1	1	1	1	1	1	1	1	1

<div>BOE</div>	PRODUCT GROUP	REV	ISSUE DATE
	Customer SPEC	Rev. P6	2021.09.17

9.0 POWER SEQUENCE

To prevent a latch-up or DC operation of the LCD module, the power on/off sequence shall be as shown in below



- $0.5\text{ ms} \leq T1 \leq 10\text{ ms}$
- $0 \leq T2 \leq 50\text{ ms}$
- $0 \leq T3 \leq 50\text{ ms}$
- $1\text{ sec} \leq T4$
- $500\text{ ms} \leq T5$
- $200\text{ ms} \leq T6$

Notes:

1. When the power supply VDD is 0V, keep the level of input signals on the low or keep high impedance.
2. Do not keep the interface signal high impedance when power is on.
3. Back Light must be turn on after power for logic and interface signal are valid.
4. T7 decreases smoothly, there is none re-bouncing voltage.

SPEC. NUMBER	SPEC. TITLE	PAGE
S8-65-8D-183	MV270FHB-N20 Product Specification Rev. P5	17 OF 26

BOE	PRODUCT GROUP	REV	ISSUE DATE
	Customer SPEC	Rev. P6	2021.09.17

10.0 MECHANICAL CHARACTERISTICS

10.1 Dimensional Requirements

FIGURE 6 (located in Appendix) shows mechanical outlines for the model MV270FHB-N20. Other parameters are shown in Table 8.

<Table 8. Dimensional Parameters>

Parameter	Specification	Unit
Dimensional outline	607.048(H) × 347.492(V) × 1.32(Depth)	mm
Weight	660	gram
Active area	597.888(H) × 336.312(V)	mm
Pixel pitch	0.3114 (H) × 0.3114(V)	mm
Number of pixels	1920(H)×1080 (V) (1 pixel = R + G + B dots)	pixels

10.2 Anti-Glare and Polarizer Hardness.

The surface of the LCD has an anti-glare coating to minimize reflection and a coating to reduce scratching.

10.3 Light Leakage

There shall not be visible light from the back-lighting system around the edges of the screen as seen from a distance 50cm from the screen with an overhead light level of 350lux.

SPEC. NUMBER S8-65-8D-183	SPEC. TITLE MV270FHB-N20 Product Specification Rev. P5	PAGE 18 OF 26
------------------------------	---	------------------

11.0 RELIABLITY TEST

The Reliability test items and its conditions are shown in below.
 <Table 9 Reliability Test Parameters >

No	Test Items	Conditions
1	High temperature storage test	Ta = 60 °C, 240 hrs
2	Low temperature storage test	Ta = -20 °C, 240 hrs
3	High temperature & high humidity operation test	Ta = 50 °C, 80%RH, 240hrs
4	High temperature operation test	Ta = 50 °C, 240hrs
5	Low temperature operation test	Ta = 0°C, 240hrs
6	Thermal shock	Ta = -20 °C ↔ 60 °C (0.5 hr), 100 cycle
7	Electro-static discharge test	Air : 150 pF, 330Ω, 15 KV Contact : 150 pF, 330Ω, 8 KV

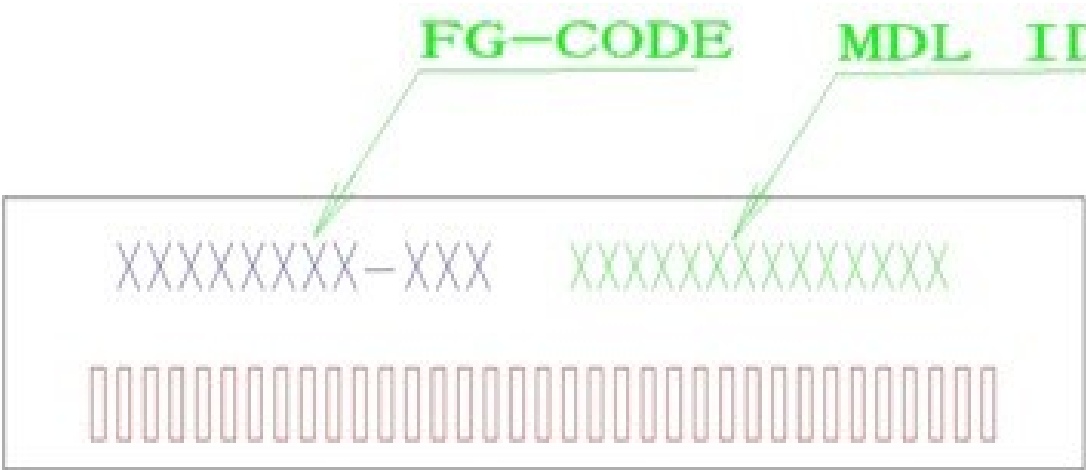
BOE	PRODUCT GROUP	REV	ISSUE DATE
	Customer SPEC	Rev. P6	2021.09.17

12.0 HANDLING & CAUTIONS

- (1) Cautions when taking out the module
 - Pick the pouch only, when taking out module from a shipping package.
- (2) Cautions for handling the module
 - As the electrostatic discharges may break the LCD module, handle the LCD module with care. Peel a protection sheet off from the LCD panel surface as slowly as possible.
 - As the LCD panel and back - light element are made from fragile glass material, impulse and pressure to the LCD module should be avoided.
 - As the surface of the polarizer is very soft and easily scratched, use a soft dry cloth without chemicals for cleaning.
 - Do not pull the interface connector in or out while the LCD module is operating.
 - Put the module display side down on a flat horizontal plane.
 - Handle connectors and cables with care.
- (3) Cautions for the operation
 - When the module is operating, do not lose CLK, ENAB signals. If any one of these signals is lost, the LCD panel would be damaged.
 - Obey the supply voltage sequence. If wrong sequence is applied, the module would be damaged.
- (4) Cautions for the atmosphere
 - Dew drop atmosphere should be avoided.
 - Do not store and/or operate the LCD module in a high temperature and/or humidity atmosphere. Storage in an electro-conductive polymer packing pouch and under relatively low temperature atmosphere is recommended.
- (5) Cautions for the module characteristics
 - Do not apply fixed pattern data signal to the LCD module at product aging.
 - Applying fixed pattern for a long time may cause image sticking.
- (6) Other cautions
 - Do not disassemble and/or re-assemble LCD module.
 - Do not re-adjust variable resistor or switch etc.
 - When returning the module for repair or etc., Please pack the module not to be broken. We recommend to use the original shipping packages.

SPEC. NUMBER	SPEC. TITLE	PAGE
S8-65-8D-183	MV270FHB-N20 Product Specification Rev. P5	20 OF 26

13.0 PRODUCT SERIAL NUMBER



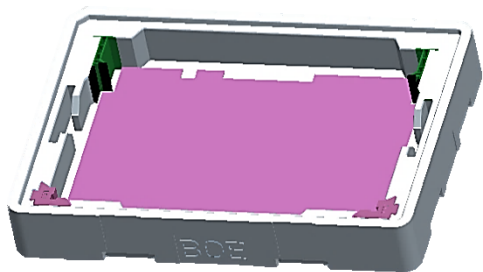
MDL ID Naming Rule:

Code \ Digit	1	2	3	4	5	6	7	8	9	10	11	12	13
Code	S	L	S	5	1	2	3	5	9	0	0	0	0
Description	Model Code /GBN		Grade	Line	Year		Month	Model Extension Code		SerialNo 00001-ZZZZZZ			

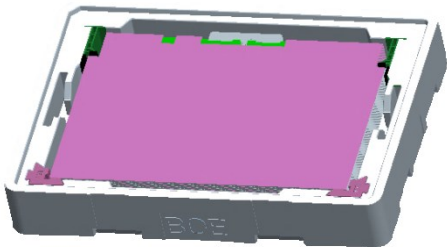
BOE	PRODUCT GROUP	REV	ISSUE DATE
	Customer SPEC	Rev. P6	2021.09.17

14.0 Packing

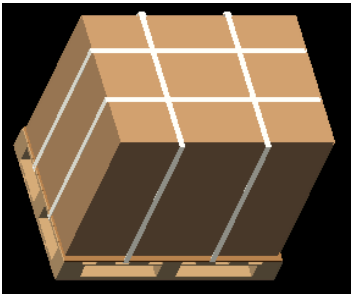
14.1 Packing Order



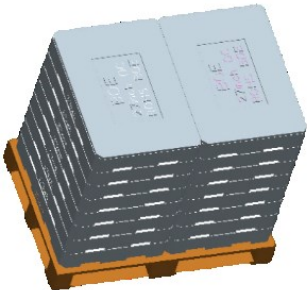
put an 2.5t EPE pad in the EPO bottom.



Put one open cell,then put 2.5t EPE pad ... ,
totally 15 pcs open cells and 16 pcs 2.5t E
PE pads in the EPO bottom.



Place out box and wrap film around
the box. Pack with 4 packing belts.



Put totally 16ea boxes and 2ea cover
per pallet

SPEC. NUMBER S8-65-8D-183	SPEC. TITLE MV270FHB-N20 Product Specification Rev. P5	PAGE 22 OF 26
------------------------------	---	------------------

BOE	PRODUCT GROUP	REV	ISSUE DATE
	Customer SPEC	Rev. P6	2021.09.17

14.2 Packing Note

- Box Dimension : 770mm(L) × 550mm(W) × 123mm(H)
- Package Quantity in one Box : 15pcs

14.3 Box label


- Label Size : 70 mm (L) × 30 mm (W)
- Contents

Model : MV270FHB-N20

Q`ty : Module 15Q`ty in one box


Serial No. : Box Serial No. See next page for detail description.

Date : Packing Date



FUZHOU BOE OPTOELECTRONICS
TECHNOLOGY Co.,LTD

MODEL: XXXXXXXXX-XXX
Q'TY: XXX


SERIAL NO: XXXXXXXXXXXXXXXX
DATE: XXXX.XX.XX



XXXXXXXXXXXXXXXXXX



RoHS Compliant



XXXX

RoHS Mark

Internal CODE

Digit	1	2	3	4	5	6	7						
Code	x	x	x	x	x	x	x	x	x	x	x	x	x
Des.	1. Model Code GBN 2. Grade 3. Line 4. Year(2016:16, 2017:17, ...) 5. Month(1, 2, 3, ..., 9, X, Y, Z) 6. Revision Code 7. Serial Number												

SPEC. NUMBER S8-65-8D-183	SPEC. TITLE MV270FHB-N20 Product Specification Rev. P5	PAGE 23 OF 26
------------------------------	---	------------------

15.0 APPENDIX

Figure 1. Measurement Set Up

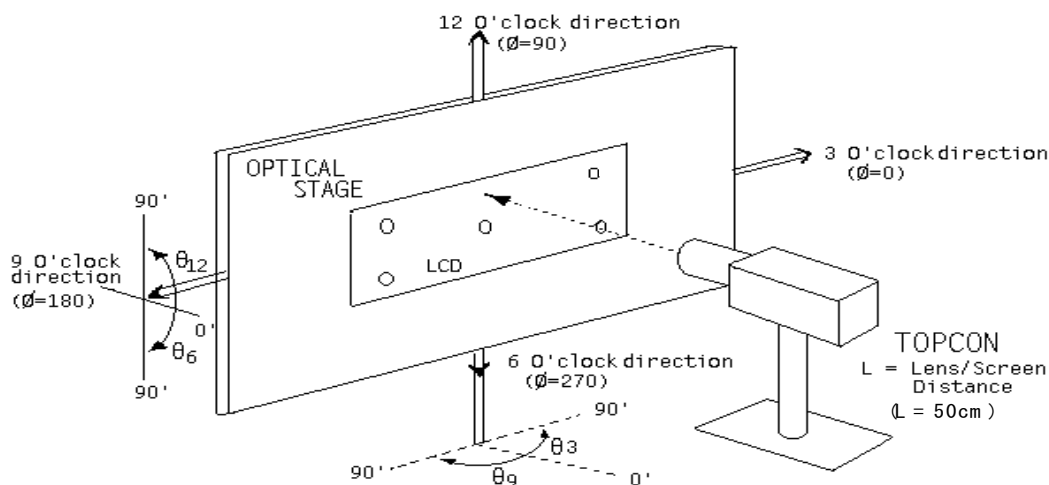


Figure 2. White Luminance and Uniformity Measurement Locations (9 points)

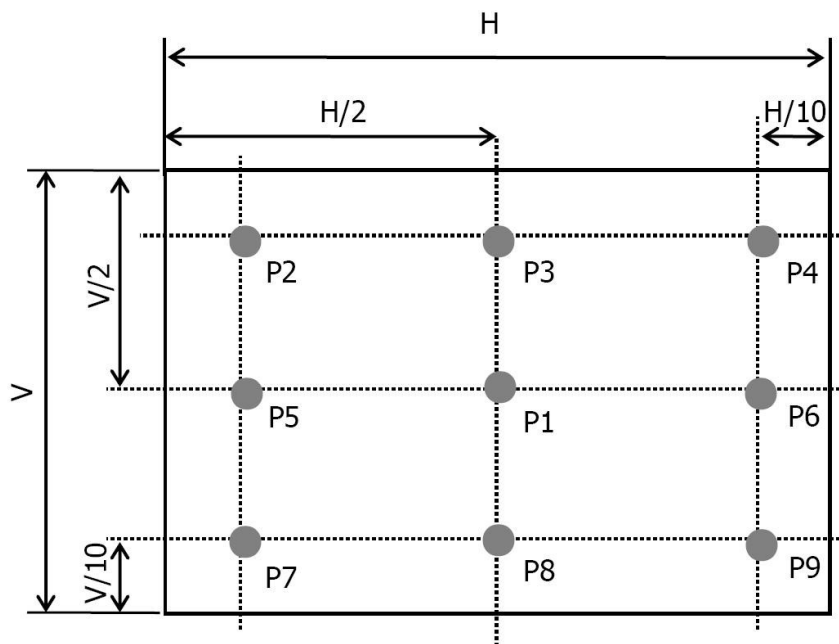


Figure 3. Response Time Testing

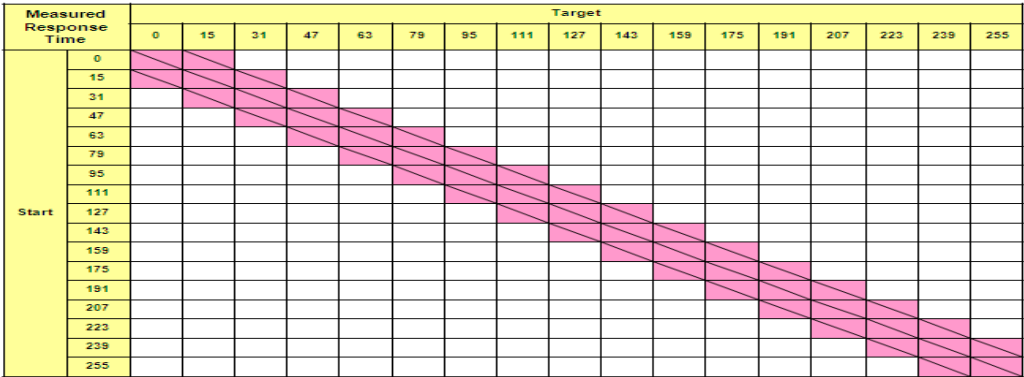
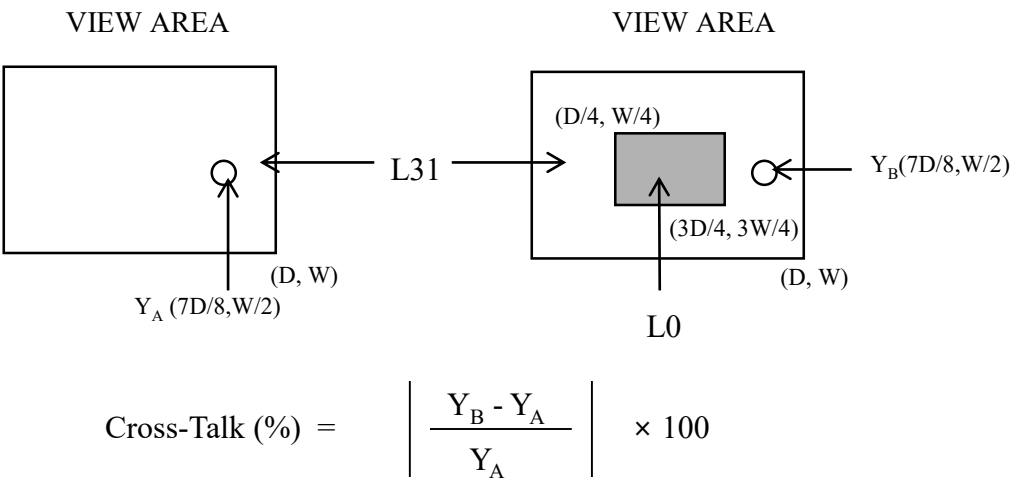


Figure 4. Cross Modulation Test Description



Where: Y_A = Initial luminance of measured area (cd/m²)
 Y_B = Subsequent luminance of measured area (cd/m²)
 The location measured will be exactly the same in both patterns

